

# \$415,000 - 158 Kirkland Close, Red Deer

MLS® #A2217445

**\$415,000**

3 Bedroom, 2.00 Bathroom, 971 sqft

Residential on 0.12 Acres

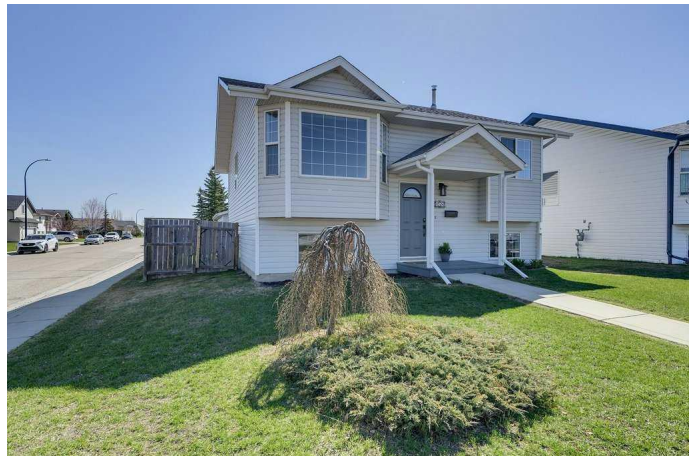
Kentwood West, Red Deer, Alberta

Turn into the desirable and family-friendly neighbourhood of Kentwood East and be instantly welcomed by the curb appeal of 158 Kirkland Close. Perfectly situated on a large corner lot with ample parking, this well-maintained home is conveniently located near schools, parks, recreational facilities, and all major amenities.

Step inside to a warm and inviting foyer, where you'll immediately notice the pride of ownership throughout. The open-concept main floor offers a functional layout ideal for both everyday living and entertaining. The bright living room is highlighted by a west-facing bay windowâ€”perfect for enjoying evening sunsetsâ€”and brand new water-resistant laminate flooring.

The kitchen has been thoughtfully updated with a full stainless steel appliance package, an upgraded sink faucet, tasteful cabinetry enhancements, a wide breakfast bar, and a cozy coffee nook. Just off the dining area, step outside to a spacious tiered deckâ€”an excellent spot to host summer barbecues or relax with friends and family.

The fully fenced backyard features a gated RV parking pad and an oversized insulated garage, complete with 220V power and a 30-amp plug. Back alley access makes parking your vehicles, toys, or RV a breeze.



The primary bedroom offers peaceful backyard views and the comfort of morning sunrises, while a spacious second bedroom with double closets is located just across the hall. The main 4-piece bathroom includes generous counter space and a deep soaker tub for added relaxation.

Downstairs, large windows flood the lower level with natural light, making the additional 800+ sq ft of living space feel bright and welcoming. A large rumpus room with a wet bar awaits your personal touches—perfect for family time, hobbies, or entertaining. The lower-level bathroom features a spa-inspired walk-in shower and heated tile flooring. A third bedroom, storage area, and utility room complete the lower level.

Additional upgrades include a newer roof, furnace, hot water tank (both just one year old), and essential air conditioning for year-round comfort. This property has been recently painted making it truly move-in ready.

Whether you're a first-time buyer, downsizer, or investor, 158 Kirkland Close offers outstanding value and is ready to welcome its next owner. Don't miss this opportunity!

Built in 2003

**Essential Information**

MLS® #	A2217445
Price	\$415,000
Bedrooms	3
Bathrooms	2.00
Full Baths	2
Square Footage	971
Acres	0.12
Year Built	2003

Type	Residential
Sub-Type	Detached
Style	Bi-Level
Status	Active

### Community Information

Address	158 Kirkland Close
Subdivision	Kentwood West
City	Red Deer
County	Red Deer
Province	Alberta
Postal Code	T4P 4A3

### Amenities

Parking Spaces	2
Parking	Double Garage Detached
# of Garages	2

### Interior

Interior Features	Breakfast Bar, Ceiling Fan(s), Crown Molding, No Smoking Home, Open Floorplan, Pantry, Storage, Vinyl Windows
Appliances	Central Air Conditioner, Dishwasher, Electric Stove, Garage Control(s), Microwave Hood Fan, Refrigerator, Washer/Dryer, Window Coverings
Heating	Forced Air
Cooling	Central Air
Has Basement	Yes
Basement	Finished, Full

### Exterior

Exterior Features	None
Lot Description	Back Yard, Landscaped, Standard Shaped Lot
Roof	Asphalt Shingle
Construction	Vinyl Siding, Wood Frame
Foundation	Poured Concrete

### Additional Information

Date Listed	May 2nd, 2025
Days on Market	14
Zoning	R1

**Listing Details**

Listing Office                Royal LePage Network Realty Corp.

Data is supplied by Pillar 9â,,ç MLSÂ® System. Pillar 9â,,ç is the owner of the copyright in its MLSÂ® System. Data is deemed reliable but is not guaranteed accurate by Pillar 9â,,ç. The trademarks MLSÂ®, Multiple Listing ServiceÂ® and the associated logos are owned by The Canadian Real Estate Association (CREA) and identify the quality of services provided by real estate professionals who are members of CREA. Used under license.