

\$899,900 - 430044 Highway 20, Rural Ponoka County

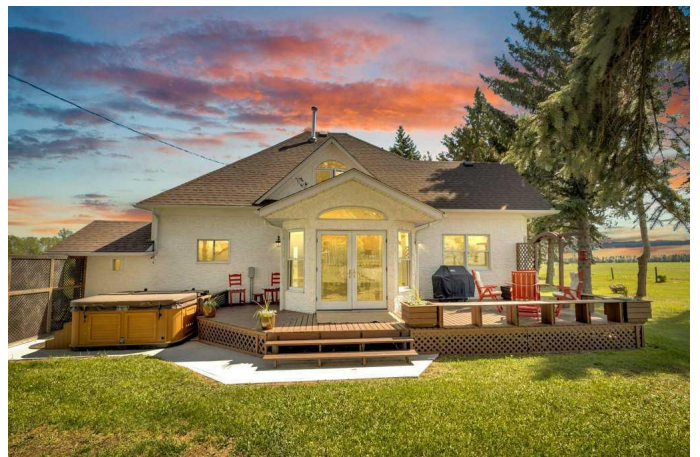
MLS® #A2225701

\$899,900

3 Bedroom, 3.00 Bathroom, 1,848 sqft
Residential on 19.56 Acres

NONE, Rural Ponoka County, Alberta

Welcome to a rare gem nestled just 2 minutes north of Rimbey â€” a beautifully preserved and thoughtfully updated 1909 farmhouse sitting on an expansive 19.56-acre property that effortlessly blends timeless charm with modern comfort. Step into a home where history meets contemporary living. This charming farmhouse features three spacious bedrooms upstairs and two and a half bathrooms, providing plenty of comfort and convenience for the whole family. The kitchen has been tastefully updated with stylish finishes and includes, stunning epoxy countertops, and brand-new appliances installed in 2024. Warmth and durability are ensured with the new flooring added in 2022, while in-floor heating in the basement keeps the home cozy during colder months. The home has been extensively updated throughout the years, with most recently a new hot water tank installed in April 2025, complemented by a second tank added in 2020. Throughout the home, you'll find abundant storage space, making it as practical as it is inviting. Outdoor enthusiasts and hobby farm lovers will find everything they need on this serene rural property. A large garden offers the perfect space to grow your own fresh produce, while a charming chicken coop provides daily farm-fresh eggs. The original hip roof barn stands as a proud and rare feature, full of character and still structurally sound. Adding to its uniqueness, the barn loft has been transformed into a private pickleball



courtâ€™ideal for year-round fitness and fun. Nature lovers will appreciate the personal orchard filled with fruit-bearing trees and the romantic â€œLovers Lane,â€• a peaceful, tree-lined path that invites evening strolls toward breathtaking sunsets. After a day well spent, unwind in your private hot tub under a canopy of starsâ€™the perfect way to relax and enjoy the tranquility of this exceptional property. Whether you're looking for a peaceful family homestead, a hobby farm, or a one-of-a-kind rural retreat, this property delivers charm, functionality, and unforgettable moments. This is more than a home â€™ itâ€™™s a lifestyle. Located just minutes from Rimbey â€™ the convenience of town, with the tranquility of country living. Come and step into a storybook setting ready for your next chapter.

Built in 1909

Essential Information

| | |
|----------------|----------------------------------|
| MLS® # | A2225701 |
| Price | \$899,900 |
| Bedrooms | 3 |
| Bathrooms | 3.00 |
| Full Baths | 2 |
| Half Baths | 1 |
| Square Footage | 1,848 |
| Acres | 19.56 |
| Year Built | 1909 |
| Type | Residential |
| Sub-Type | Detached |
| Style | 2 Storey, Acreage with Residence |
| Status | Active |

Community Information

| | |
|-------------|-------------------|
| Address | 430044 Highway 20 |
| Subdivision | NONE |

| | |
|-------------|---------------------|
| City | Rural Ponoka County |
| County | Ponoka County |
| Province | Alberta |
| Postal Code | T0C 2J0 |

Amenities

| | |
|---------|-------------|
| Parking | Parking Pad |
|---------|-------------|

Interior

| | |
|-------------------|--|
| Interior Features | Breakfast Bar, Ceiling Fan(s), No Animal Home, No Smoking Home, See Remarks, Storage |
| Appliances | Built-In Oven, Dishwasher, Freezer, Gas Cooktop, Microwave, Refrigerator, Washer/Dryer, Window Coverings |
| Heating | Forced Air |
| Cooling | None |
| Has Basement | Yes |
| Basement | Finished, Full |

Exterior

| | |
|-------------------|---|
| Exterior Features | Garden, Playground, Private Yard |
| Lot Description | Cleared, Front Yard, Fruit Trees/Shrub(s), Garden, Landscaped, Many Trees, Secluded, Farm |
| Roof | Asphalt Shingle |
| Construction | Stucco, Wood Frame |
| Foundation | Block |

Additional Information

| | |
|----------------|----------------|
| Date Listed | May 29th, 2025 |
| Days on Market | 52 |
| Zoning | AG |

Listing Details

| | |
|----------------|------------|
| Listing Office | CIR Realty |
|----------------|------------|

Data is supplied by Pillar 9â„¢ MLS® System. Pillar 9â„¢ is the owner of the copyright in its MLS® System. Data is deemed reliable but is not guaranteed accurate by Pillar 9â„¢. The trademarks MLS®, Multiple Listing Service® and the associated logos are owned by The Canadian Real Estate Association (CREA) and identify the quality of services provided by real estate professionals who are members of CREA. Used under license.